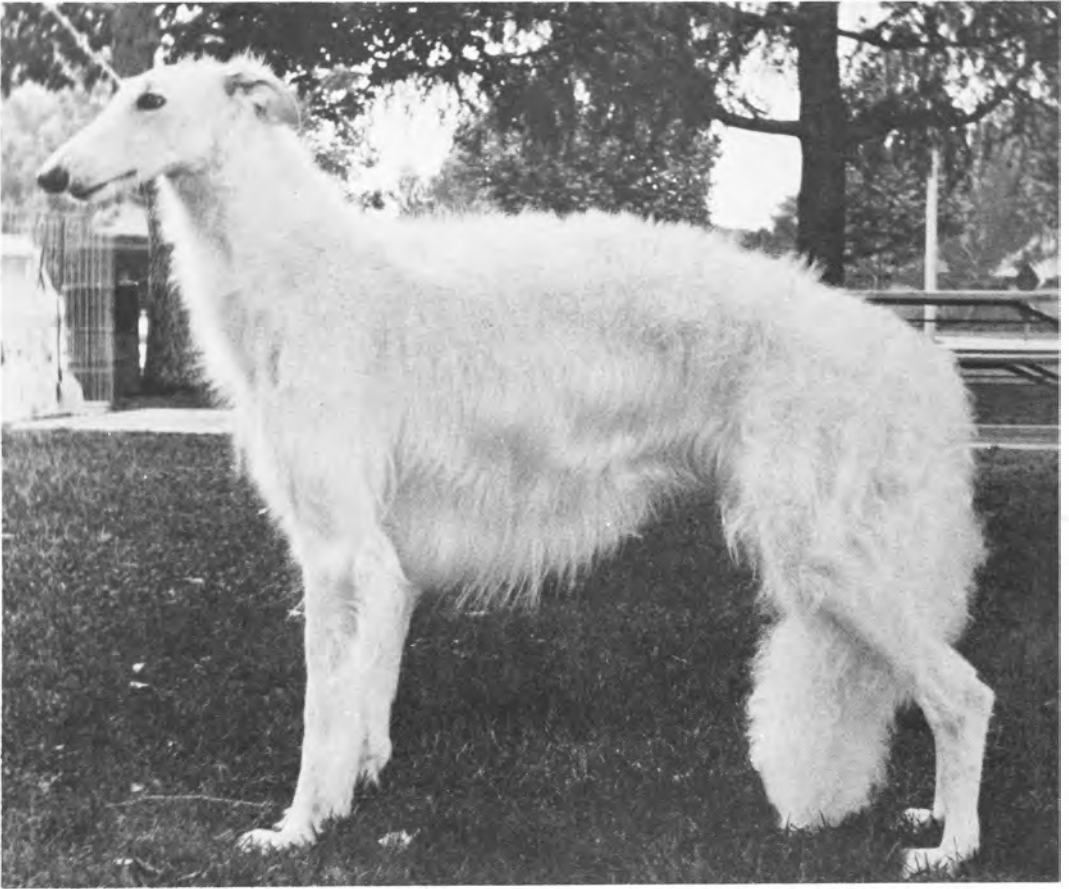


KIFKA



Kifka Elektra

February 4, 1986
Breeder: .Owners
Female
White and Apricot

Patricia M. and Kenneth T. Burton, Jr.
P.O. Box 55369
Valencia, CA 91385
(805)297-3090

"Excelling in Type, Elegance, Substance, Movement"

For over 11 years here at Kifka, we have pursued a carefully planned breeding program which aims for quality, not quantity.

| | | | | |
|----------------------------------|----------------------------|--------------------------------|---|---|
| Ch. Zelimir Nakoa von Berghof | | Am. Can. Mex. Ch. | { | Am. Can. Ch. Sirhan Poraschai |
| | | Tamburas George von Berghof | | Utka Alexander (Ger. Imp.) |
| Shanna Contessa von Berghof | | Ch. Chancellor's Cornnitzer | { | Dominoff's Comrad Ragnar |
| | | | | Dortex Elegante |
| | | Am. Can. Mex. Ch. | { | Am. Can. Ch. Sirhan Poraschai |
| Tamburas George von Berghof | Utka Alexander (Ger. Imp.) | | | |
| | | Tamara Utka von Berghof | { | Ch. Nelshire's Porta-Geist |
| | | | | Am. Mex. Ch. Morningstar Mir von Berghof |